



Chapel Close, Holywell Green, HX4 9BF
£600,000

E&H Edkins Holmes
ESTATE AGENTS

Set in a desirable location with views across open fields from the garden, this executive detached home offers spacious and flexible family living.

The ground floor features a welcoming entrance hall with an attractive galleried staircase, a large lounge, and a superb living/dining kitchen with log burner, opening through to a well-proportioned conservatory. A practical utility room, cloakroom, and ground-floor study complete the layout, perfectly suited to modern family life and home working.

Upstairs, there are four generous bedrooms. The master suite boasts dual-aspect windows, a dressing room, and a stylish en-suite shower room. A contemporary four-piece house bathroom serves the remaining bedrooms.

Externally, the property benefits from a double garage with EV charging point, gated driveway parking, and a garden with beautiful open views over adjoining fields.

A truly impressive family home combining modern comfort with scenic surroundings – early viewing is highly recommended.



Ground Floor:

Entrance Hall

Understairs cupboard. Radiator. Composite door to front elevation.

Cloakroom

Wash hand basin. Low flush W.C. Partially tiled. Radiator. UPVC double glazed window to rear elevation.

Study 12'6" x 9'11" (3.833 x 3.027)

Radiator. UPVC double glazed windows to rear and side elevation.

Split Level One

Lounge 20'3" x 15'9" (6.189 x 4.819)

Gas stove. Two designer radiators. UPVC double glazed windows to front and side elevations.

Ground Floor:

Living / Dining Kitchen 16'0" x 9'5" + 17'9" x 9'10" (4.887 x 2.880 + 5.422 x 3.019)

Fitted kitchen with wall and base units. One and a half bowl composite sink. Granite work surfaces. Dual fuel Range cooker (included). Stainless steel and glass cooker hood. Integrated dishwasher. Designer radiator. Log burner. Tiled floor. UPVC French doors leading to conservatory. UPVC double glazed door leading garden. UPVC double glazed windows to front, rear and side elevations.

Utility Room 5'2" x 4'8" (1.578 x 1.440)

Plumbing for washing machine.

Conservatory 12'11" x 11'0" (3.958 x 3.373)

UPVC constructed conservatory. Designer radiator.

First Floor:

Landing

Stairs leading from Entrance Hall. Stairs leading to Second Split Level. Radiator.

Bedroom Two 12'5" x 10'0" (3.799 x 3.050)

Radiator. UPVC double glazed windows to front and side elevations.

Bedroom Three 12'6" x 9'10" (3.835 x 3.020)

Radiator. UPVC double glazed window to side elevation.

Bedroom Four 8'8" x 8'10" (2.652 x 2.701)

Radiator. UPVC double glazed window to front elevation.

Bathroom

Wash hand basin. Low flush W.C. Free standing bath with mixer taps. Separate shower cubicle. Partially tiled. Extractor fan. Chrome towel radiator. UPVC double glazed window to rear elevation.

Split Level Two:

Master Bedroom 12'8" x 15'10" (3.868 x 4.838)

Feature brick wall. Radiator. UPVC double glazed windows to front and side elevations.

Dressing Room 7'1" x 7'3" (2.174 x 2.214)

Loft access.

En-Suite

Wash hand basin. Low flush W.C. Shower cubicle. Partially tiled. Extractor fan. Chrome towel radiator. UPVC double glazed window to rear elevation.

Garage

Electric roller doors. Power. Light. EV point. Boiler (installed June 2025).

Parking

Gated block paved driveway.

Rear Garden

Lawn and patio garden with decking area, shed and outside tap.

Council Tax Band

F

Location

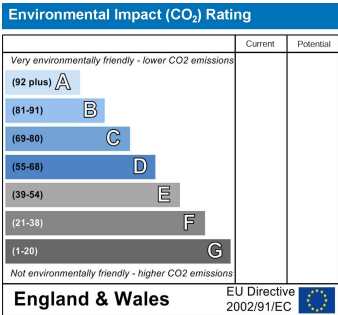
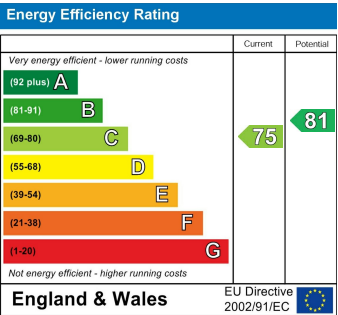
To find the property, you can download a free app called

What3Words which every 3 metre square of the world has been given a unique combination of three words.

The three words designated to this property is: oldest.types.mice

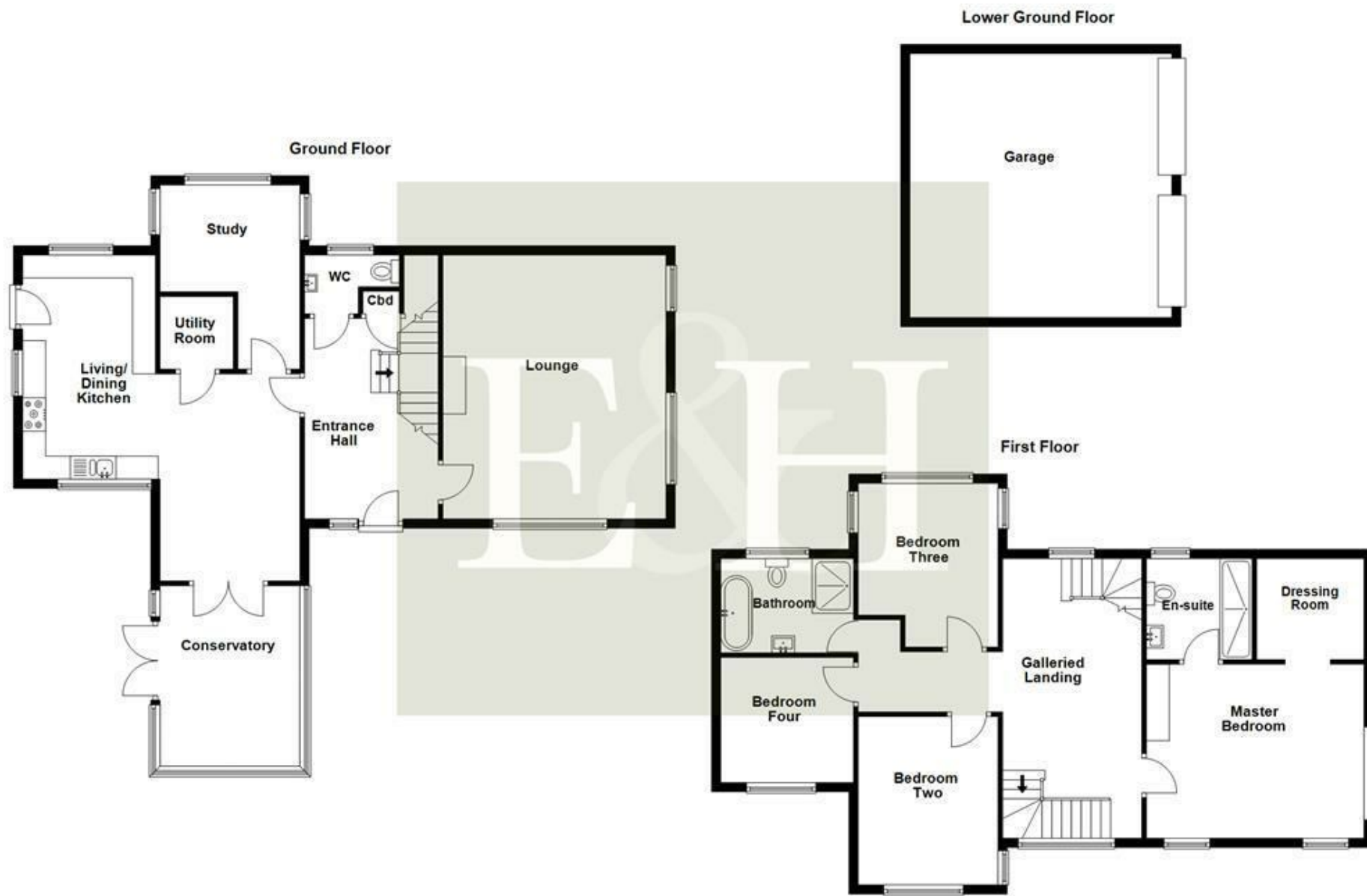
Disclaimer

DISCLAIMER: Whilst we endeavour to make our sales details accurate and reliable they should not be relied on as statements or representations of fact and do not constitute part of an offer or contract. The Seller does not make or give nor do we or our employees have authority to make or give any representation or warranty in relation to the property. Please contact the office before viewing the property to confirm that the property remains available. This is particularly important if you are contemplating travelling some distance to view the property. If there is any point which is of particular importance to you we will be pleased to check the information for you. We would strongly recommend that all the information which we provide about the property is verified by yourself on inspection and also by your conveyancer, especially where statements have been made to the effect that the information provided has not been verified. We are not a member of a client money protection scheme.









All measurements are approximate and for display purposes only
Plan produced using PlanUp.